

waterpik

Instruction Manual Manuel d'instructions Manual de instrucciones

Model # is located by barcode.

Please write your model # on your sales receipt or below.

Le numéro de modèle se trouve à côté du code-barres.

Veillez inscrire le numéro de modèle sur votre reçu de vente ou ci-dessous.

El número de modelo está ubicado al lado del código de barras. Sírvase escribir el número de modelo en el recibo de compra o debajo.

Model Number:

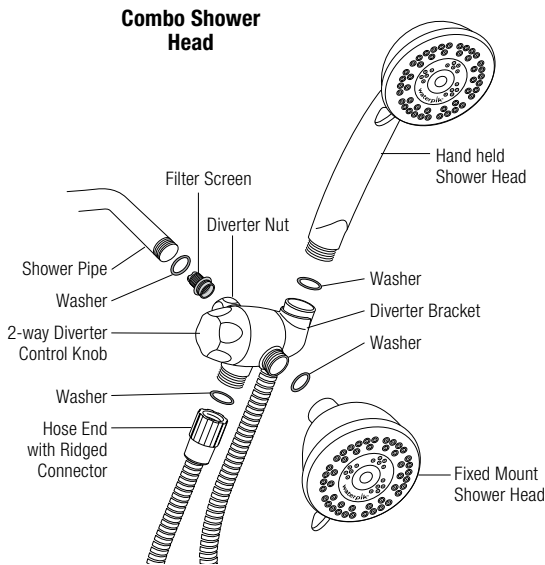
Register your shower head at www.waterpik.com/shower-register

Enregistrez votre pomme de douche à www.waterpik.com/shower-register

Registre su regadera en www.waterpik.com/shower-register

FN 20021843-F AD

INSTALLATION



ENGLISH

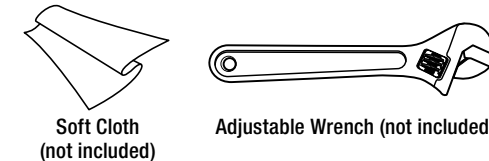
Thank you for purchasing this Waterpik® shower head. This booklet provides information to make installation easy and quick. You are close to enjoying a powerful and invigorating shower experience with your new Waterpik® shower head.

You can view more information about Waterpik® shower head products at www.waterpik.com. To learn more about Waterpik® water for wellness® benefits go to www.waterpikwellness.com.

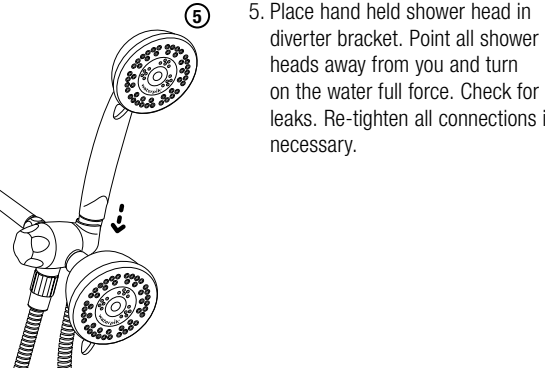
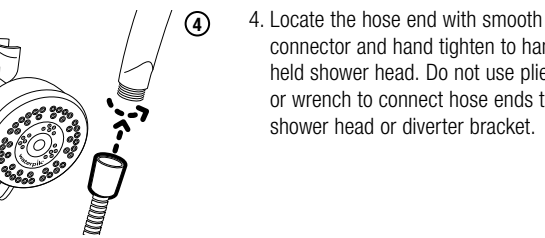
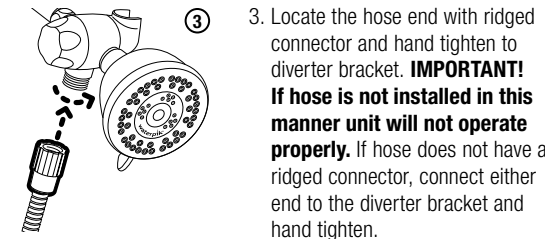
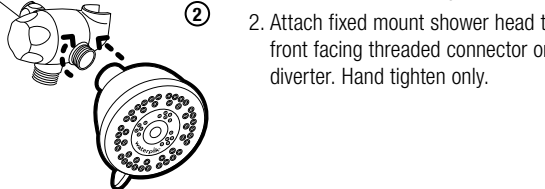
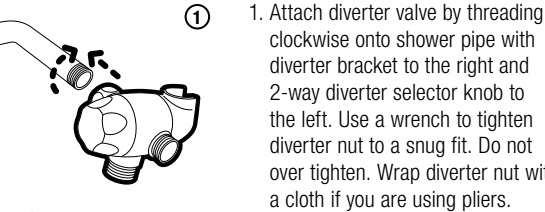
Note: pictures depicted may not directly illustrate your shower head.

PRIOR TO INSTALLATION

- Gather the tools to install the shower head.



- Remove old shower head and remove all pipe tape.
- Ensure that the washer from the old shower is not connected to the shower pipe. Use a thin utensil to check inside the shower pipe for washers, such as a pencil or screw driver. **Do not use your fingers.**

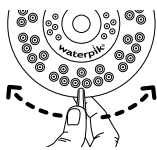


Note: Several U.S. state and local municipal plumbing codes require the use of a backflow prevention device when installing a hand shower. This device is termed a vacuum breaker. If your hand shower includes a vacuum breaker it will be located in the hose, and the hose end with the vacuum breaker will include a sticker that reads "attach this vacuum breaker end to shower bracket." If the hose is not installed in this manner, water will not flow. If your hand shower does not include a vacuum breaker, and you would like to obtain one free of charge, please contact us at **1-800-525-2774** (U.S. calls only) and request part number 20009558.

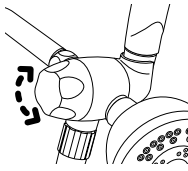
OPERATION:

Spray Selector:

Spray Selector allows you to select from various spray patterns. Spray pattern is controlled by the small lever that rotates left and right.



To change between the hand held or fixed mount spray, turn the knob on the diverter clockwise or counter clockwise.



WARNINGS:

- To avoid hot water dangers and conserve even more energy, make sure your water heater is set at 120°F (48.9°C) or below.
- Test the tub/shower water with your hand before bathing.
- For additional safety for Ecoflow® or high efficiency shower heads, it is recommended that all homes have installed a pressure balance tub and shower valve with the rotational limit stops properly set by a plumber. If you are unsure of your valve type consult your plumber.
- For external use only.** The potentially deadly amoeba, *Naegleria fowleri*, may be present in some tap water or unchlorinated well water.
- Always ensure the hand held shower head is properly placed in the bracket, so as to prevent the shower head from falling.
- Do not pull on or tug the flexible hose. This may result in the shower head coming loose and falling.

CARE AND CLEANING

- To maintain proper working conditions cleaning is required when mineral deposits appear on the spray orifices. To clean mineral deposits, gently rub the rubber nozzles on the face of the shower head to dislodge.
- To clean heavier deposits, remove shower head and soak face down in 1–2 cups of white vinegar (use white vinegar only) for about 2–3 hours. Replace shower head and run in each mode to flush out vinegar.
- Do not clean or rinse any part with harsh chemicals, heavy duty cleaners, or abrasives; this may damage parts or finish and will void warranty.**
- Clean filter screen by unscrewing from shower arm and rinsing entrance to diverter. Re-install filter screen and follow steps 1–4 under installation to reinstall shower head/bracket.

TROUBLESHOOTING GUIDE

Problem	Solution
No water flow from installed shower head	a Confirm previous shower washer is not in the shower pipe. b Confirm there is only one washer in the diverter nut.
Low water pressure or missing spray patterns	a Clean shower head in vinegar/water solution. (See care & cleaning section). b Clean filter screen.
Leaking at pipe/diverter nut connection	a Confirm there is only one washer in the diverter nut. b Grate bar of soap across the shower pipe threads to act as a sealant.
Diverter spins	a Confirm washer is in diverter nut. b Tighten an additional ¼ to ½ turn.

LIFETIME LIMITED WARRANTY

Save your receipt as proof of purchase is required for warranty action. Water Pik, Inc. warrants to the original purchaser of this product that it is free from defects in material and workmanship for as long as the original purchaser owns this product. Water Pik, Inc. will replace the product which in our opinion is defective,

provided that the product has not been abused, misused, altered or damaged after purchase. (This includes damage due to use of tools or harsh chemicals.) In the event an item has been discontinued we will replace with what we deem to be the closest product. Water Pik, Inc. is not responsible for labor charges, installation, or other consequential cost. The responsibility of Water Pik, Inc. shall not exceed the original purchase price of the product. This warranty gives you specific legal rights. You may also have other rights that vary where you reside.

Water Pik disclaims all other express or implied warranties to the extent permitted by law including, but not limited to, all warranties of merchantability and fitness for a particular purpose. All implied warranties are limited to the duration of this limited warranty. Some states or provinces may not allow limitation on how long an implied warranty lasts, so above may not apply to you.

Limitation of Liability: This limited warranty is your sole remedy against Water Pik and it shall not be liable for any damages, whether direct, indirect, incidental, special, consequential, exemplary or otherwise, including but not limited to property damage, arising out of any theory of recovery, including statutory, contract or tort.

BINDING ARBITRATION AND WAIVER OF RIGHT TO ASSERT MATTERS IN COURT AND RIGHT TO JURY TRIAL

By purchasing, installing, or using this product you agree that any controversy or claim arising out of or relating to your purchase, use,

modification, installation, or removal of this product shall be settled by binding arbitration. The arbitrator's decision will be final and binding. Judgment on the award rendered by the arbitrator may be entered in any court having jurisdiction over the matter. Further, you agree that you will not have the right to litigate any claim arising out of or in relation to your purchase, use, modification, installation, or removal of this product in any court or to have a jury trial on that claim.

Arbitration of any matters shall be administered by the American arbitration association and conducted by one arbitrator in accordance with the consumer arbitration rules of the American Arbitration Association in effect at the time of filing of the demand. The venue for all such arbitrations shall be Colorado and any such arbitration shall be subject to the Federal Arbitration Act and Colorado law.

WAIVER OF RIGHT TO PARTICIPATE IN CLASS ACTIONS OR PURSUE CLAIMS IN A REPRESENTATIVE CAPACITY.

Further, by purchasing, installing, or using this product you agree that arbitration must be on an individual basis. This means neither you, nor we, may join or consolidate claims in arbitration by or against other purchasers or users of Water Pik products or the general public. Additionally, you may not litigate in court or arbitrate any claims as a representative or member of a class or in a purported representative capacity on behalf of the general public, other purchasers or users

of this product, other persons or entities similarly situated, or in a private attorney general capacity.

If product malfunctions or becomes damaged, stop use and contact Water Pik, Inc. for assistance.

Have any questions or need assistance?

For quick service prior to calling have your model number and receipt ready.

In the U.S., call our toll-free Customer Assistance Line **1-800-525-2774**, Monday – Friday, 7:00 AM – 5:00 PM MST. English only.

In Canada, call our bilingual toll-free Customer Assistance Line **1-888-226-3042**, Monday – Friday, 7:00 AM – 5:00 PM MST. or visit www.waterpik.ca

or visit www.waterpik.com

© 2020 Water Pik, Inc. Printed in China.

waterpik

Water Pik, Inc., a subsidiary of Church & Dwight Co., Inc.

1730 East Prospect Road

Fort Collins, CO 80553-0001 U.S.A.

www.waterpik.com

FRANÇAIS

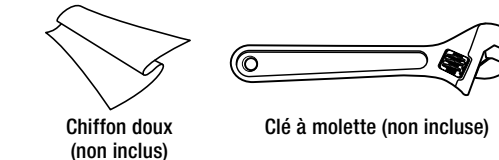
Nous vous remercions pour votre acquisition de ce produit de douchage Waterpik®. Ce livret fournit des instructions pour une installation rapide et facile. Vous pourrez dans peu de temps bénéficier de la puissance et des effets rafraichissants de votre nouveau produit de douchage Waterpik®.

D'autres informations sur les douchettes Waterpik® sont disponibles sur le site www.waterpik.com. Pour en savoir plus sur les bienfaits water for wellness® de Waterpik®, visitez le site Web www.waterpikwellness.com.

Note : Les illustrations incluses peuvent ne pas représenter exactement le produit acheté (douchette).

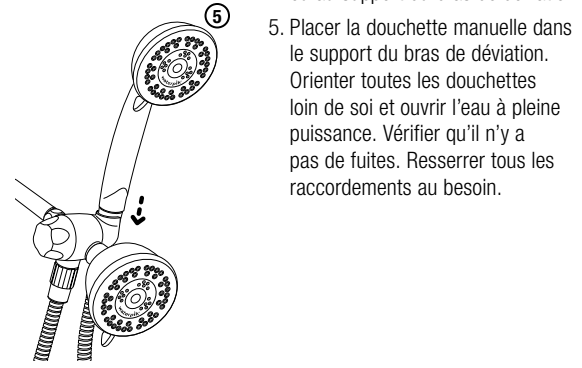
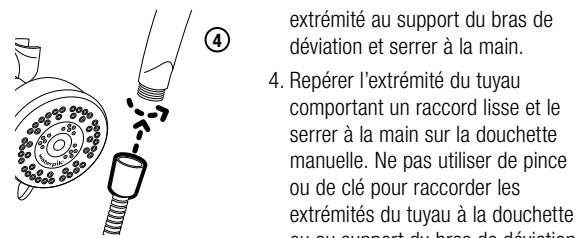
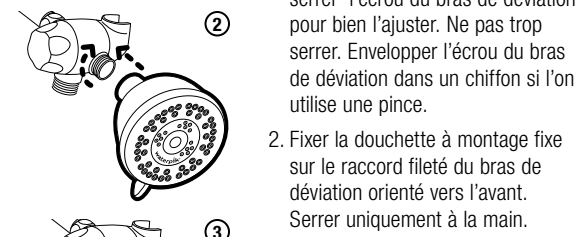
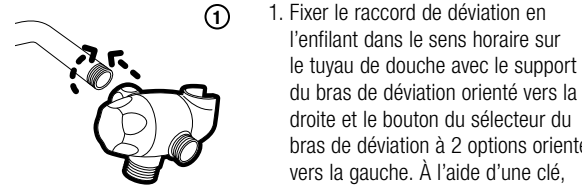
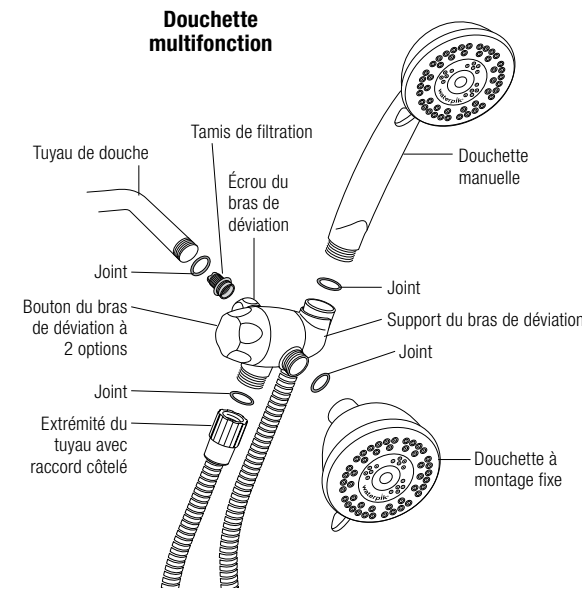
AVANT L'INSTALLATION

- Regrouper les outils nécessaires à l'installation de la douchette.



- Retirez l'ancienne douchette et enlevez l'adhésif à tuyauteries.
- Veiller à ce que le joint de la douchette existante ne reste pas attaché sur le tuyau de douche. Utiliser un ustensile mince tel un crayon ou un tournevis pour vérifier qu'aucun joint ne se trouve à l'intérieur du tuyau de douche. **Ne pas utiliser les doigts.**

INSTALLATION

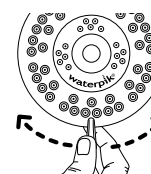


Remarque : Plusieurs codes de plomberie fédéraux et municipaux locaux des É.-U. requièrent l'installation d'un dispositif de prévention de reflux pour l'installation d'une douchette manuelle. Ce dispositif est connu sous le nom de brise-vide. Si la douchette manuelle comprend un brise-vide, celui-ci se situe dans le tuyau et l'extrémité du tuyau avec le brise-vide comporte un autocollant sur lequel est inscrit « raccorder cette extrémité du brise-vide au raccord de douche ». Si le tuyau n'est pas installé de cette manière, l'eau ne coulera pas. Si la douchette manuelle ne comprend pas de brise-vide et que vous souhaitez en obtenir un sans frais, veuillez nous contacter au **1-800-525-2774** (uniquement pour les appels provenant des É.-U.) et demandez la pièce n° 20009558.

UTILISATION DU PRODUIT

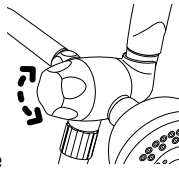
Sélecteur du mode d'aspersion :

Le sélecteur du mode d'aspersion permet de choisir l'un des modes d'aspersion disponibles sur la douchette. Le pivotement d'une petite manette (vers la droite ou vers la gauche) permet la sélection du mode d'aspersion.



Pour permuter entre les deux sources

d'aspersion (douchette à montage fixe et douchette manuelle), manoeuvrer le bouton du bras de déviation (rotation dans un sens ou dans l'autre)



AVERTISSEMENTS :

- Afin de conserver encore davantage d'énergie et d'éviter les dangers liés à une eau trop chaude, s'assurer que votre chauffe-eau soit réglé à une température maximale de 120°F (48,9°C).
- Tester la température de l'eau de la baignoire/douche avec la main avant de se baigner.
- Pour plus de sécurité, l'installation (dans n'importe quel domicile) d'un mitigeur à équilibrage des pressions (pour baignoire/douche) avec butées de limitation de rotation adéquatement réglées par un plombier est recommandée pour les douchettes Ecoflow® ou les douchettes à haute efficacité. Si vous avez un doute sur votre type de mitigeur, consultez votre plombier.
- À usage externe uniquement.** L'amibe *Naegleria fowleri* potentiellement mortelle, peut être présente dans certaines eaux du robinet ou eaux de puits non chlorées.
- Toujours s'assurer que la douchette à main est correctement installée sur son support, pour empêcher la douchette de tomber.
- Ne pas tirer sur le tuyau flexible. Cela pourrait déloger la douchette de son support et la faire tomber.

ENTRETIEN ET NETTOYAGE

- Pour le maintien du bon fonctionnement de système, on doit éliminer les dépôts minéraux dès qu'ils apparaissent dans les orifices d'aspersion. Pour l'élimination des dépôts minéraux, frotter délicatement les busettes en caoutchouc sur la face de la douchette pour expulser les dépôts minéraux.
- Pour un nettoyage plus approfondi, démonter la douchette et placer celle-ci pendant 2 à 3 heures dans un récipient de vinaigre blanc (utiliser uniquement du vinaigre blanc – 250 à 500 mL). Réinstaller ensuite la douchette et ouvrir l'arrivée d'eau – laisser l'eau couler à chaque mode d'aspersion pendant 1 à 2 minutes pour éliminer tout résidu de vinaigre.
- Ne pas nettoyer ou rincer de pièces de l'appareil avec des produits chimiques puissants, nettoyants puissants ou produits abrasifs; cela peut endommager les pièces ou le revêtement et entraînera l'annulation de la garantie.**
- Nettoyer la crépine en la dévissant du bras de douche, puis en rinçant l'entrée de l'inverseur. Réinstaller la crépine, puis suivre les étapes 1 à 4 dans la section d'installation pour réinstaller la douchette/le support.

