

waterpik

Instruction Manual

Manual de instrucciones

Model # is located by barcode.
Please write your model # on your sales receipt or below.

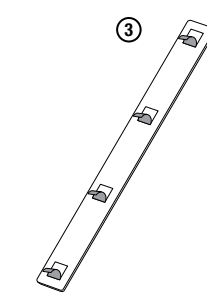
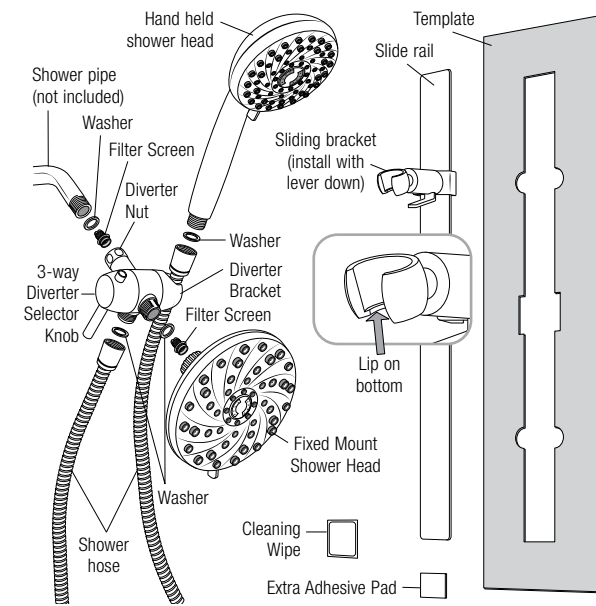
El número de modelo está ubicado al lado del código de barras.
Sirvase escribir el número de modelo en el recibo de compra o debajo.

Model Number:

www.waterpik.com/shower-register

FN 20029065-F AA

INCLUDED SHOWER COMPONENTS

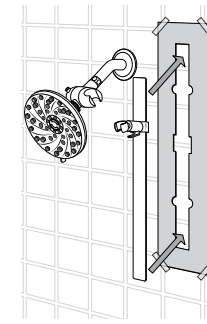


• To check alignment and height, hold up shower head and rail to confirm your desired position. The adhesive pads allow for **one time use** and **cannot be repositioned** so it's important to use the template.

Note: to ensure proper alignment of the slide rail, a level can be used. If you have shower tiles, you can use the grout lines for alignment.

3. Once you have confirmed your slide rail position, use the pre-adhesive cleaning wipe to clean the area inside the template. Let the area dry for one minute. Once it is dry, peel off burgundy color tape backing from the adhesive pads. Place the slide rail (with adhesive exposed) inside of the template and apply pressure with your hands for 20 seconds. Remove template.

If possible and for best results, do not use shower for 24 hours (minimum 12 hours).



ENGLISH

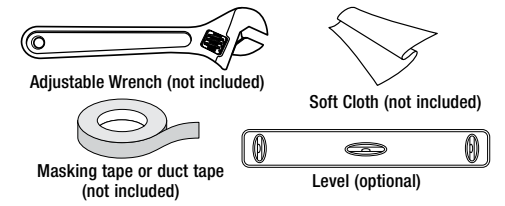
Thank you for purchasing this Waterpik® shower head. This booklet provides information to make installation easy and quick. You are close to enjoying a powerful and invigorating shower experience with your new Waterpik® shower head.

You can view more information about Waterpik® shower head products at www.waterpik.com. To learn more about Waterpik® water for wellness® benefits go to www.waterpikwellness.com.

Access an Instructional Video Online
For this model we have installation videos that are available at the following link: www.waterpik.com/InstallRail.

Note: All pictures and images depicted in the videos and this manual may not directly illustrate your shower head.

TOOLS REQUIRED



PRIOR TO INSTALLATION

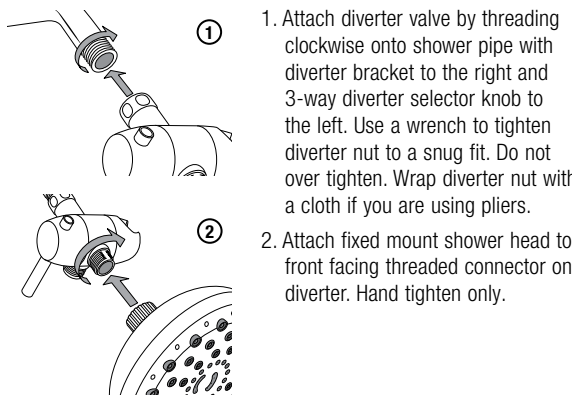
- Not recommended for use on unevenly textured tile.
- Make sure wall is clean and dry.
- A level can be used to ensure proper alignment.
- Remove old shower head and remove all pipe tape.
- Make sure that the washer from the old shower is not connected to the pipe. Use a thin utensil to check inside the pipe for washers, like a pencil or screw driver. **Do not use your fingers.**

VERY IMPORTANT! The slide adhesive pads will only stick to the wall once. Do not attempt to reposition it multiple times. It allows for a one time use.

Do not remove backings from back of the slide adhesive pads until you have used template to find desired position. Do not touch the adhesive on the back of the pads because the oil on your fingers will decrease effectiveness of the adhesive.

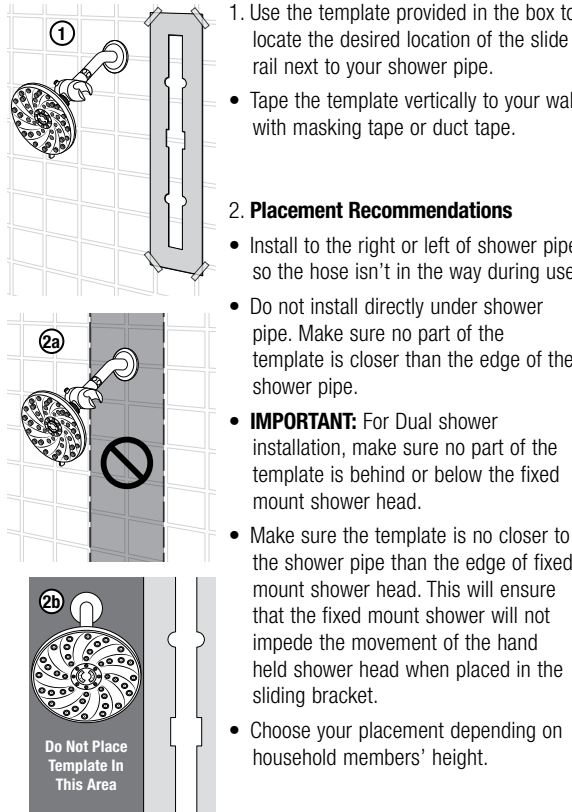
- An extra adhesive pad is included if needed.
- Note:** The slide rail requires 12 – 24 hours to fully adhere to the wall after installation.

FIXED MOUNT INSTALLATION



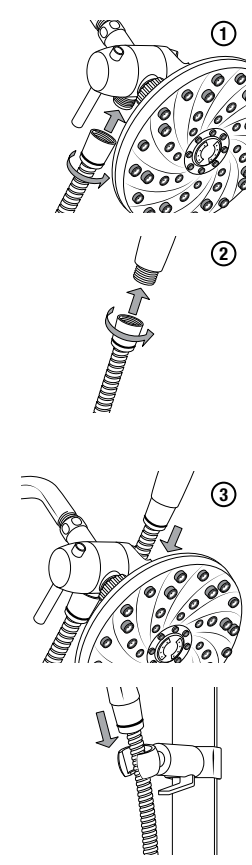
1. Attach diverter valve by threading clockwise onto shower pipe with diverter bracket to the right and 3-way diverter selector knob to the left. Use a wrench to tighten diverter nut to a snug fit. Do not over tighten. Wrap diverter nut with a cloth if you are using pliers.
2. Attach fixed mount shower head to front facing threaded connector on diverter. Hand tighten only.

SLIDE RAIL INSTALLATION



1. Use the template provided in the box to locate the desired location of the slide rail next to your shower pipe.
 - Tape the template vertically to your wall with masking tape or duct tape.
2. **Placement Recommendations**
 - Install to the right or left of shower pipe so the hose isn't in the way during use.
 - Do not install directly under shower pipe. Make sure no part of the template is closer than the edge of the shower pipe.
 - **IMPORTANT:** For Dual shower installation, make sure no part of the template is behind or below the fixed mount shower head.
 - Make sure the template is no closer to the shower pipe than the edge of fixed mount shower head. This will ensure that the fixed mount shower will not impede the movement of the hand held shower head when placed in the sliding bracket.
 - Choose your placement depending on household members' height.

SHOWER HEAD INSTALLATION



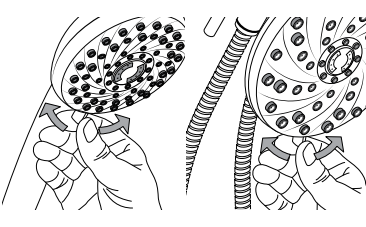
1. Connect one end of the hose to the diverter bracket and hand tighten.
2. Connect the other hose end to hand held shower head and hand tighten. Do not use pliers or wrench to connect hose ends to shower head or diverter bracket.
3. Place hand held shower head in either diverter bracket or slide rail bracket. Make sure lip in either bracket is on the bottom.
 - Holder
 - Lip on bottom
4. Point all shower heads away from you and turn on the water full force. Check for leaks. Re-tighten all connections if necessary.

Vacuum Breaker Backflow Prevention

Note: Several U.S. state and local municipal plumbing codes require the use of a backflow prevention device when installing a hand shower. This device is termed a vacuum breaker. If your hand shower includes a vacuum breaker it will be located in the hose, and the hose end with the vacuum breaker will include a sticker that reads "attach this vacuum breaker end to shower bracket." If the hose is not installed in this manner, water will not flow. If your hand shower does not include a vacuum breaker, and you would like to obtain one free of charge, please contact us at **1-800-525-2774** (U.S. calls only) and request part number 20009558.

OPERATION

Spray Selector: Spray Selector allows you to select from various spray patterns. Spray pattern is controlled by the small lever that rotates left and right.



To change between the hand held spray, fixed mount spray, or both at once, turn the knob on the diverter clockwise or counter clockwise. You will hear audible clicks.

Bracket Adjustment:

To adjust hand held spray angle, place hand held shower head in bracket and pivot forward or backward for preferred positioning.

To change position of sliding bracket:

Grasp the bracket while depressing the lever beneath body of bracket. This will release bracket and allow it to slide up or down the slide rail to desired position. Release the lever to lock in place.

Helpful Hints:

- a. For easiest adjustment, rotate the bracket slightly towards the rail, when moving the bracket up/down as shown.
- b. It may help to steady the shower with your other hand or remove the shower from the bracket before adjusting the bracket height.

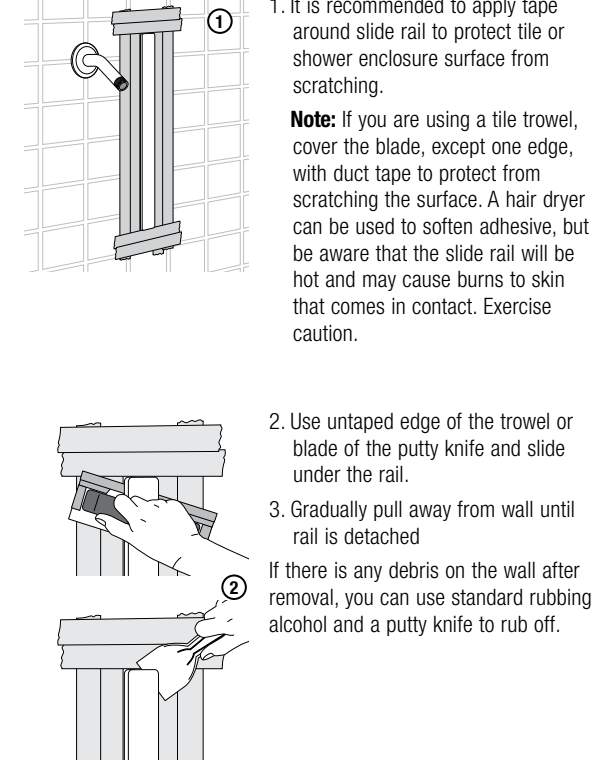
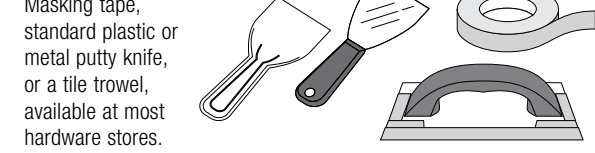
TROUBLESHOOTING GUIDE

Problem	Solution
No water flow from the shower head.	a Confirm previous shower washer is not in the shower pipe or diverter. b Check both hose ends to clear any blockage.
Low water pressure or missing spray patterns.	a Clean filter screen (located in pivot ball or diverter). b Clean shower head in vinegar/water solution. (See care & cleaning section).
Leaking at shower pipe/diverter nut connection.	a Confirm there is only one washer in the diverter nut. b Grate bar of soap across the shower pipe threads to act as a sealant.
Leaking at shower hose connections	a Confirm washer is present and fully seated in hose conical. b Tighten hose conical.
Hand held shower head does not fit in sliding bracket.	a Confirm lever is on the underside of the sliding bracket. b Rotate the holder so lip is at the bottom by twisting it with your hand.

SLIDE RAIL REMOVAL

To access a video on how to uninstall the slide rail go to: https://www.youtube.com/watch?v=1JJ5pPKNsGA&feature=emb_title

Removal Tools:



1. It is recommended to apply tape around slide rail to protect tile or shower enclosure surface from scratching.
Note: If you are using a tile trowel, cover the blade, except one edge, with duct tape to protect from scratching the surface. A hair dryer can be used to soften adhesive, but be aware that the slide rail will be hot and may cause burns to skin that comes in contact. Exercise caution.

2. Use untaped edge of the trowel or blade of the putty knife and slide under the rail.
 3. Gradually pull away from wall until rail is detached
- If there is any debris on the wall after removal, you can use standard rubbing alcohol and a putty knife to rub off.

WARNING:

1. To avoid hot water dangers and conserve even more energy, make sure your water heater is set at 48.9°C / 120°F or below.
2. Test the tub/shower water with your hand before bathing.
3. For additional safety for Ecoflow® or high efficiency shower heads, it is recommended that all homes have installed a pressure balance tub and shower valve with the rotational limit stops properly set by a plumber.

4. **For external use only.** The potentially deadly amoeba, *Naegleria fowleri*, may be present in some tap water or unchlorinated well water.
5. Do not pull on or tug the flexible hose. This may result in the shower head coming loose and falling.
6. Never attempt to use the shower head, bracket, or rail as a handle, railing, or otherwise for support. The shower head is not designed to support your weight and serious injury can result.

CARE AND CLEANING

- To maintain proper working conditions cleaning is required when mineral deposits appear on spray orifices. To clean mineral deposits, gently rub nozzles on face of shower head to dislodge.
- To clean heavier deposits, remove shower head and soak face down in 1-2 cups of white vinegar (use white vinegar only) for about 2-3 hours. Replace shower head and run in each mode to flush out vinegar.
- Do not clean or rinse any part with harsh chemicals, heavy duty cleaners, or abrasives; this may damage parts or finish and will void warranty.

LIFETIME LIMITED WARRANTY

Save your receipt as proof of purchase is required for warranty action. Water Pik, Inc. warrants to the original purchaser of this product that it is free from defects in material and workmanship for as long as the original purchaser owns this product. Water Pik, Inc. will replace the product which in our opinion is defective, provided that the product has not been abused, misused, altered or damaged after purchase. (This includes damage due to use of tools or harsh chemicals.) In the event an item has been discontinued Water Pik, Inc will replace with what it deems to be the closest product. Water Pik, Inc. is not responsible for labor charges, installation, or other consequential cost. The responsibility of Water Pik, Inc. shall not exceed the original purchase price of the product. This warranty gives you specific legal rights. You may also have other rights that vary where you reside.

Water Pik disclaims all other express or implied warranties to the extent permitted by law including, but not limited to, all warranties of merchantability and fitness for a particular purpose. All implied warranties are limited to the duration of this limited warranty. Some states or provinces may not allow limitation on how long an implied warranty lasts, so above may not apply to you.

Limitation of Liability: This limited warranty is your sole remedy against Water Pik and it shall not be liable for any damages, whether

direct, indirect, incidental, special, consequential, exemplary or otherwise, including but not limited to property damage, arising out of any theory of recovery, including statutory, contract or tort.

BINDING ARBITRATION AND WAIVER OF RIGHT TO ASSERT MATTERS IN COURT AND RIGHT TO JURY TRIAL

By purchasing, installing, or using this product you agree that any controversy or claim arising out of or relating to your purchase, use, modification, installation, or removal of this product shall be settled by binding arbitration. The arbitrator's decision will be final and binding. Judgment on the award rendered by the arbitrator may be entered in any court having jurisdiction over the matter. Further, you agree that you will not have the right to litigate any claim arising out of or in relation to your purchase, use, modification, installation, or removal of this product in any court or to have a jury trial on that claim.

Arbitration of any matters shall be administered by the American Arbitration Association and conducted by one arbitrator in accordance with the consumer arbitration rules of the American Arbitration Association in effect at the time of filing of the demand. The venue for all such arbitrations shall be Colorado and any such arbitration shall be subject to the Federal Arbitration Act and Colorado law.

WAIVER OF RIGHT TO PARTICIPATE IN CLASS ACTIONS OR PURSUE CLAIMS IN A REPRESENTATIVE CAPACITY.

Further, by purchasing, installing, or using this product you agree that arbitration must be on an individual basis. This means neither you, nor we, may join or consolidate claims in arbitration by or against other purchasers or users of Waterpik® products or the general public. Additionally, you may not litigate in court or arbitrate any claims as a representative or member of a class or in a purported representative capacity on behalf of the general public, other purchasers or users of this product, other persons or entities similarly situated, or in a private attorney general capacity.

If product malfunctions or becomes damaged, stop use immediately and contact Water Pik, Inc. for replacement.

Have any questions or need assistance?

For quickest service have your model number and receipt ready prior to calling.

In the U.S., call our toll-free Customer Assistance Line **1-800-525-2774**, Monday – Friday, 7:00 AM – 5:00 PM MST. or visit www.waterpik.com

© 2020 Water Pik, Inc. Printed in China.

waterpik

Water Pik, Inc., a subsidiary of Church & Dwight Co., Inc.
1730 East Prospect Road
Fort Collins, CO 80553-0001 U.S.A.
www.waterpik.com

